

**Board of Water Commissioners
Committee of the Whole
September 22, 2005**

**Demonstration Garden
LBWD Administration Building**

Presented by
Jeri Deneen and Jon Powell, of DPA, Inc. &
LBWD Staff

Purpose

- Long-term
- Structural change
- In water use at residential properties
- By
 - Increase desirability of non-turf landscape
 - Eliminate, or reduce size of, turf lawns
 - Facilitating the conversion to non-turf

Achieving the Purpose

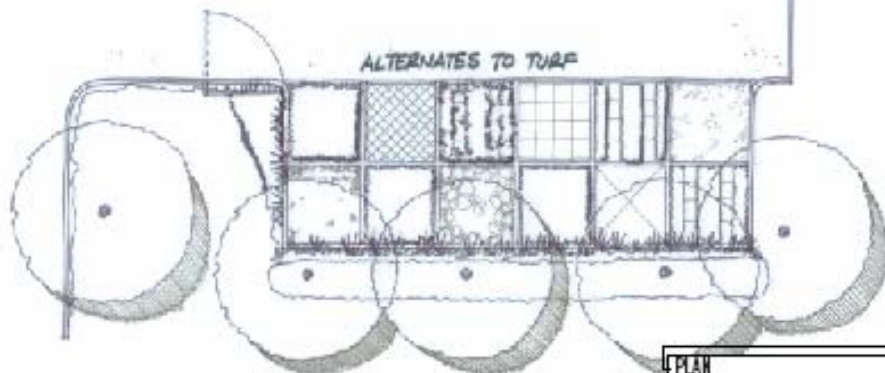
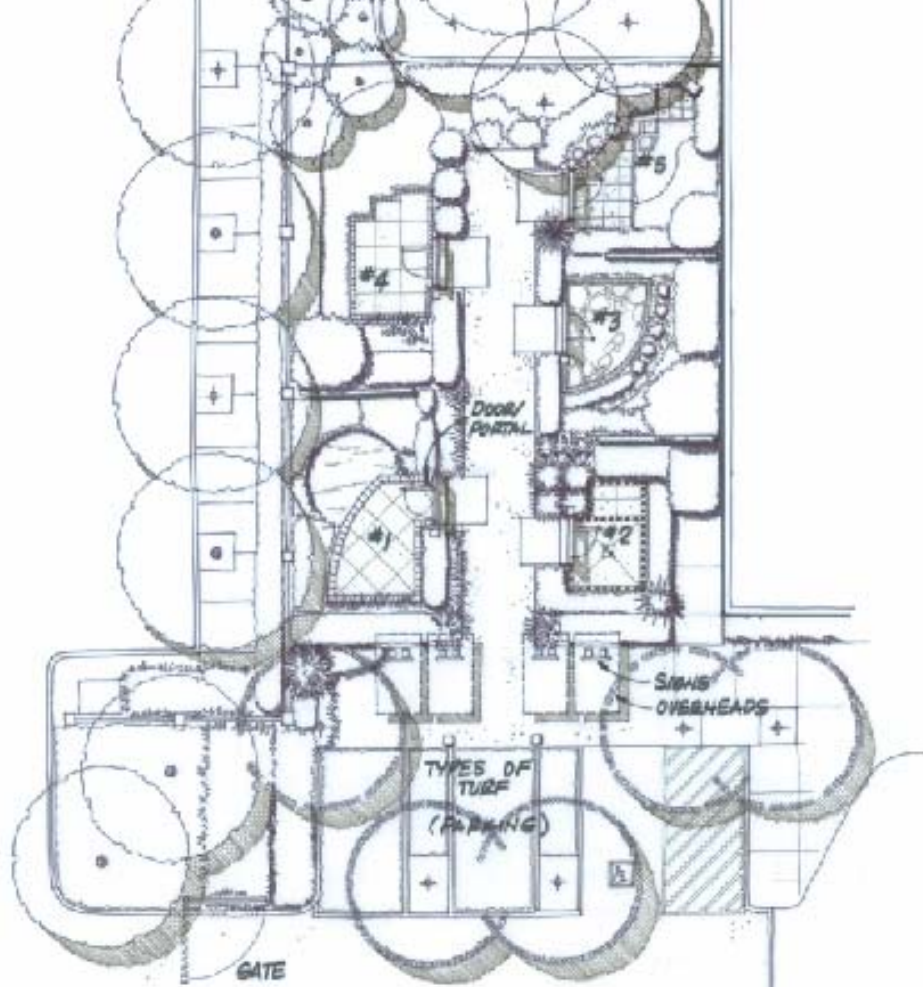
- Inspiring Change
 - Necessary
 - Intelligent
 - Beauty of alternatives
 - Functionality of alternatives

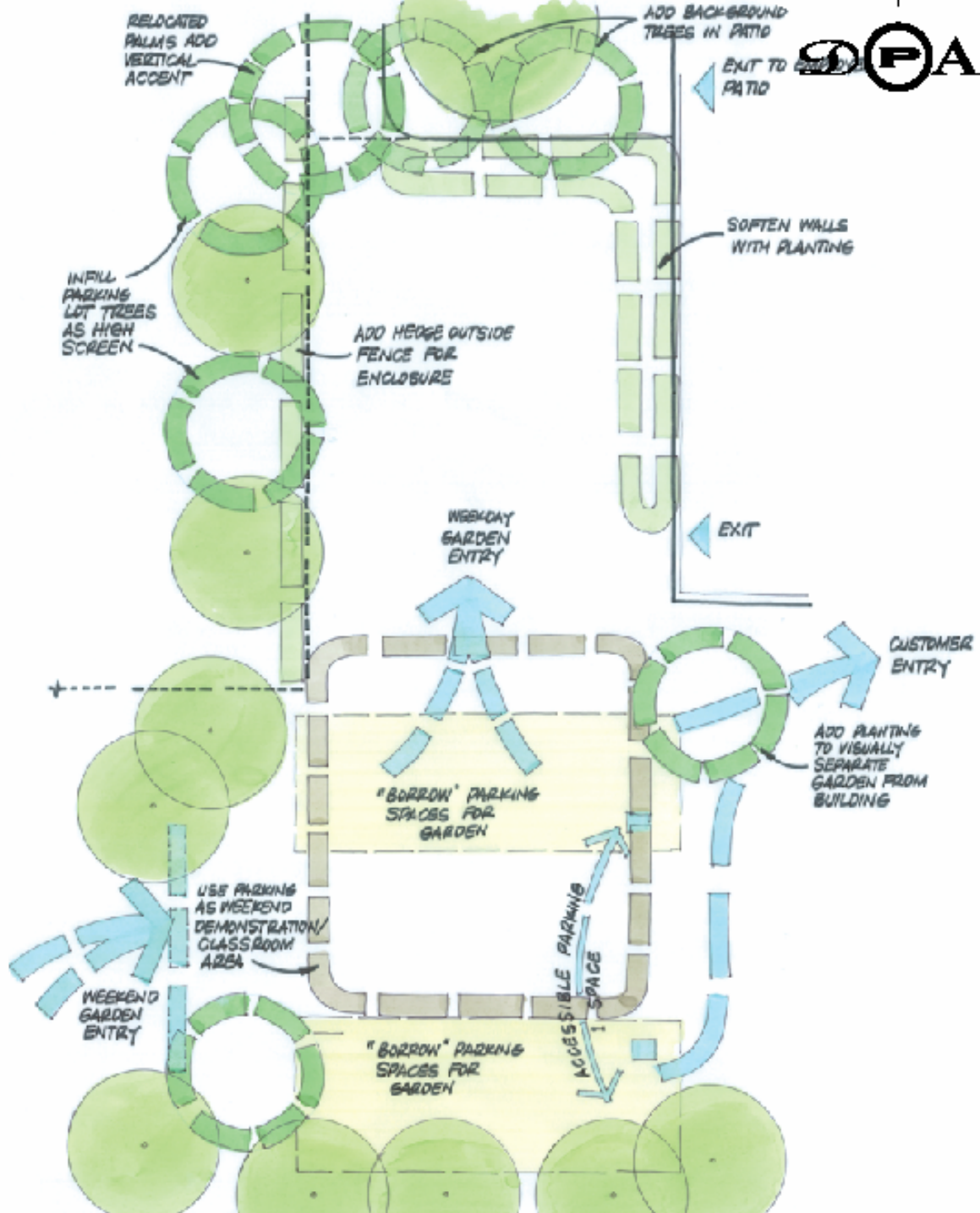
Achieving the Purpose

- Facilitating Change
 - Architectural principles and ideas
 - Sample themes (such as hummingbird garden, outdoor rooms, ...)
 - Beautiful plant palettes
 - Irrigation system design and maintenance
 - Integrated with landscape classes & education programs
 - Runoff reduction & storm-water capture
 - Other how-to information

Timeline

- Design: November – December 2005
- Construction: February – June 2006





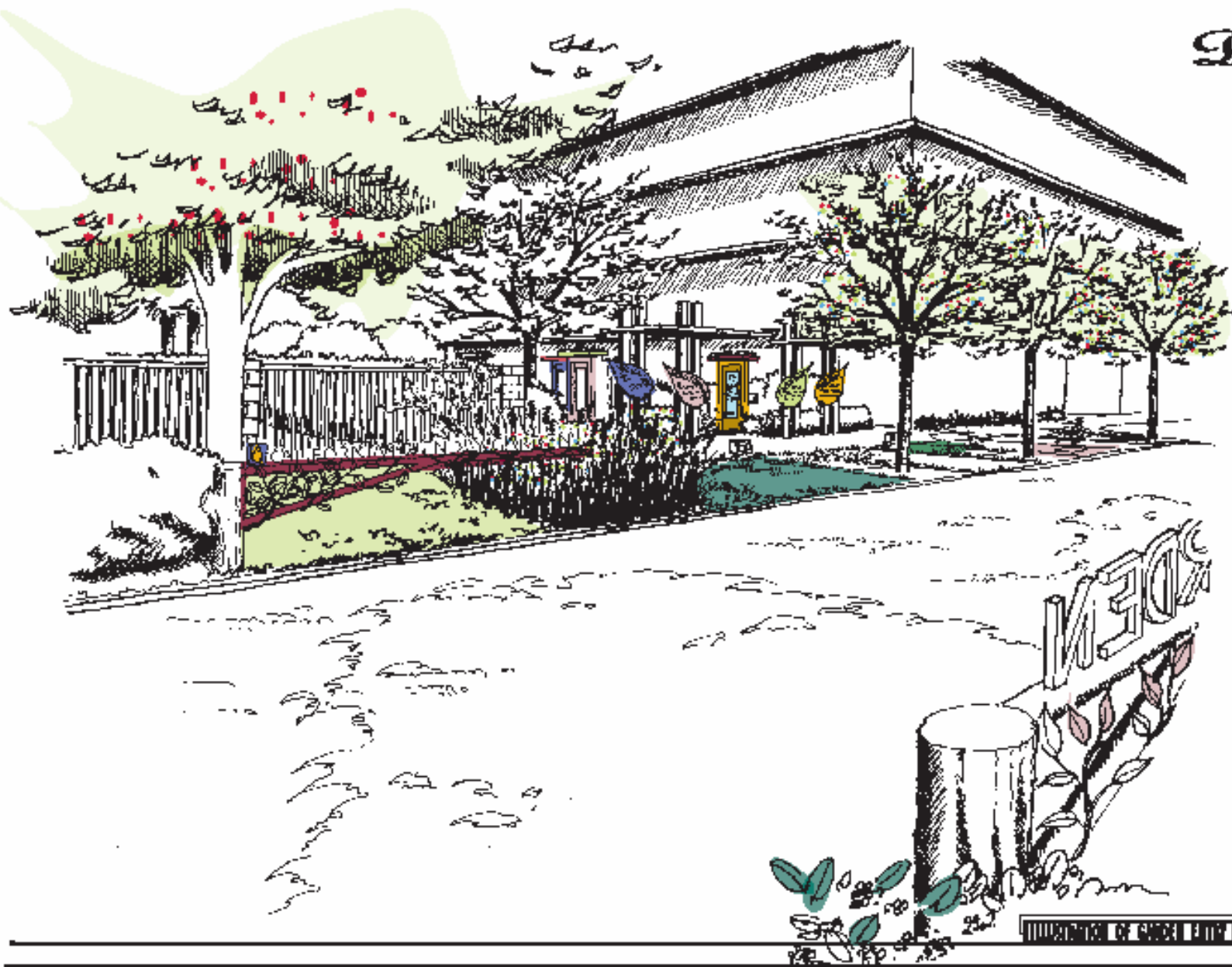
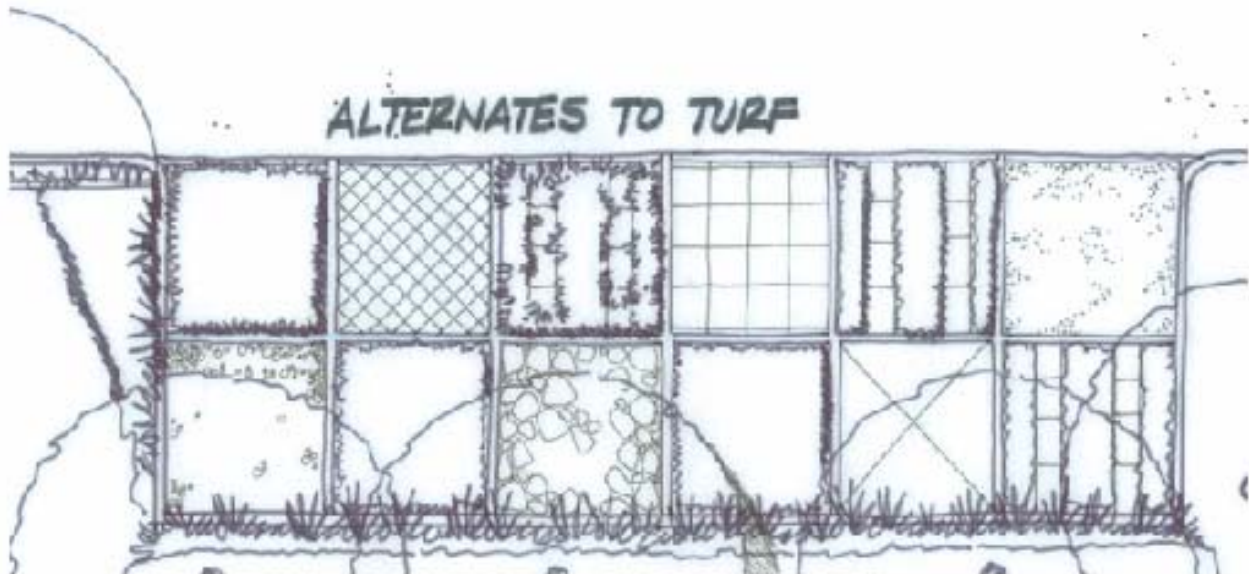
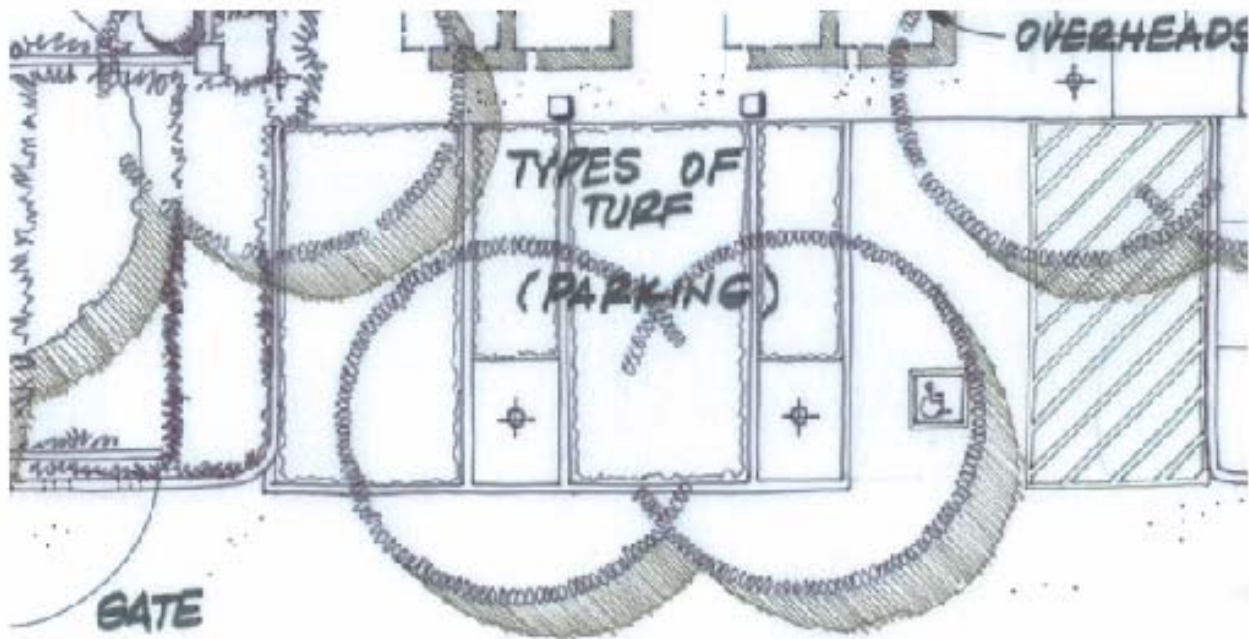
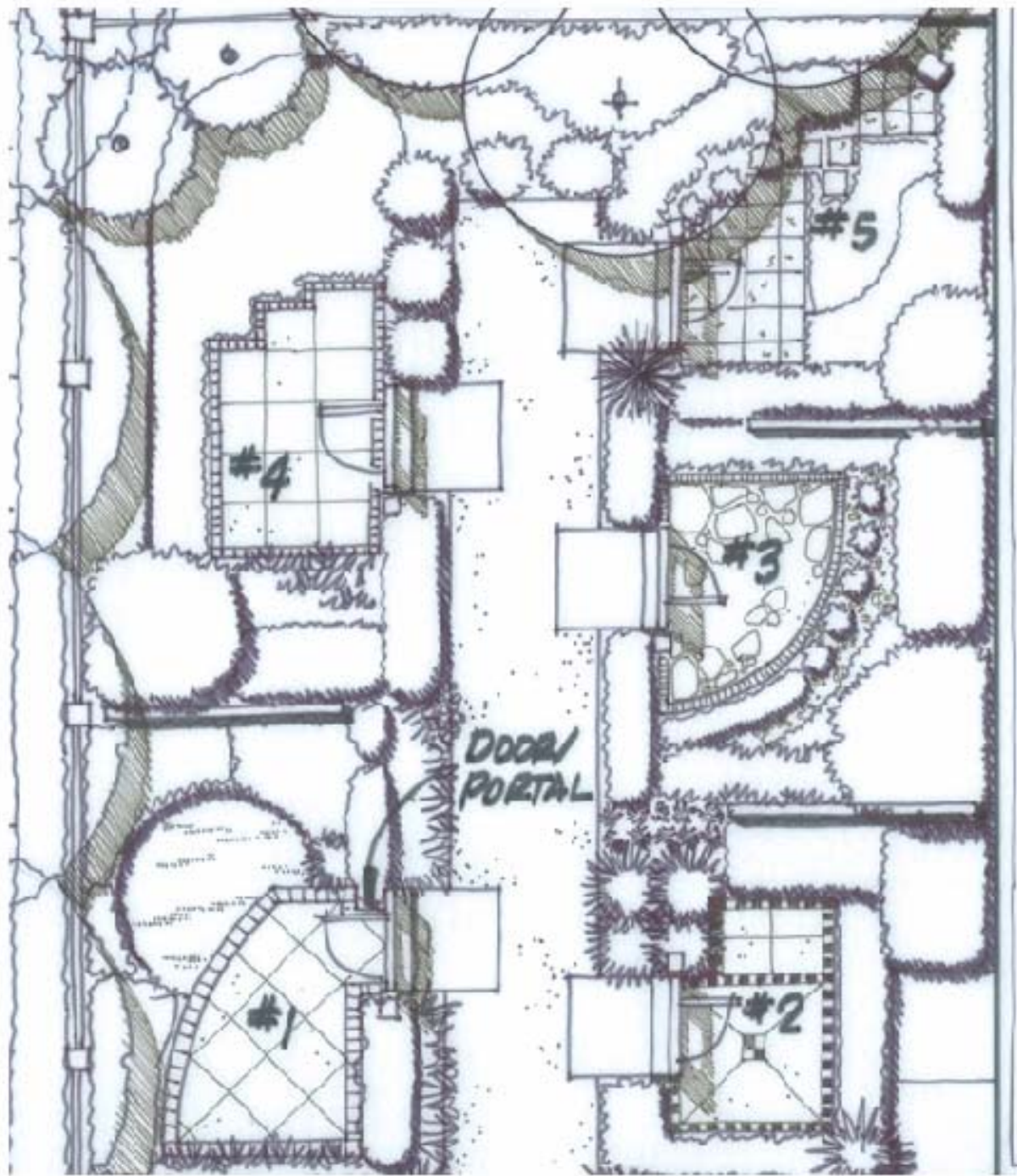
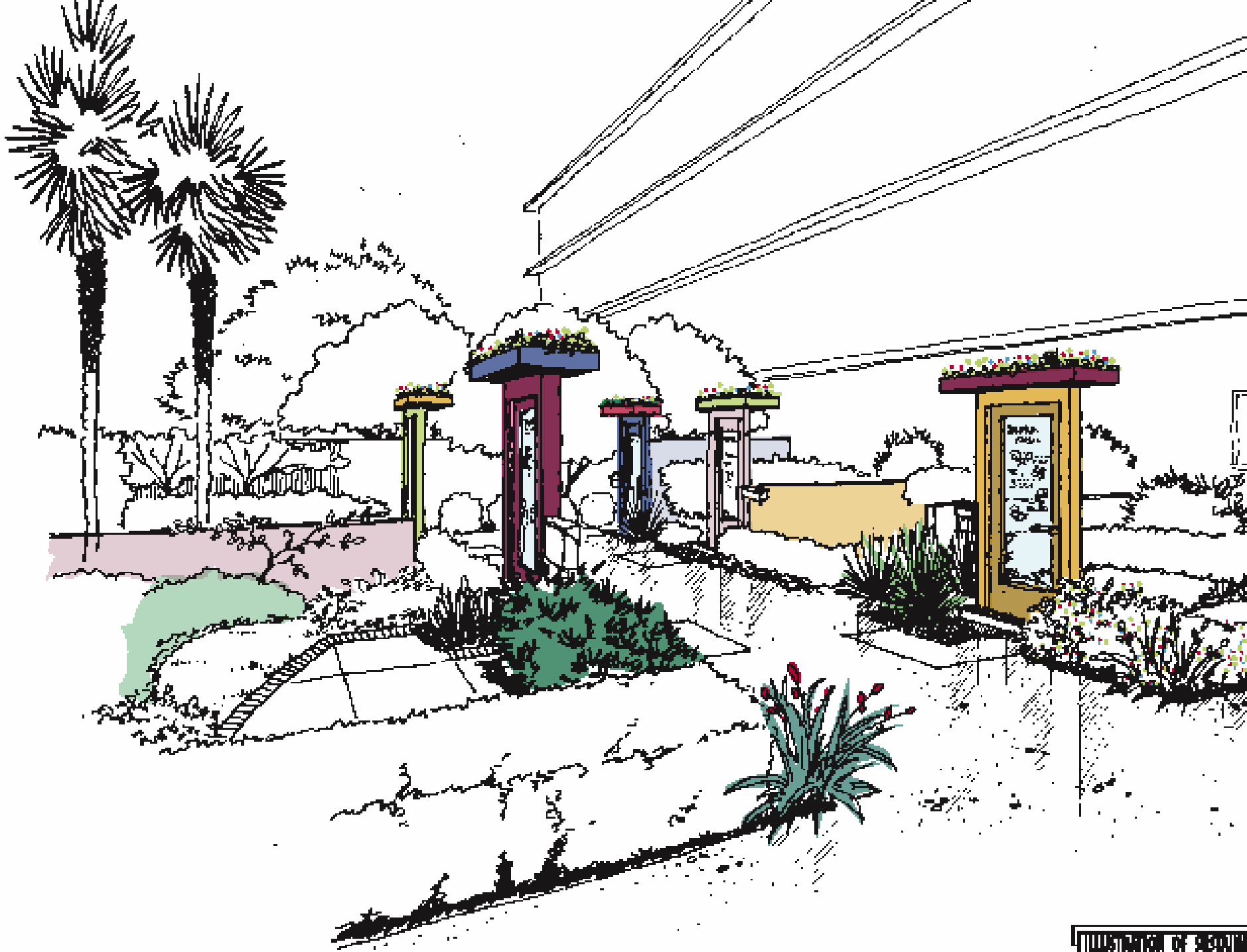


ILLUSTRATION OF GARDEN ENTRY DOOR









**Board of Water Commissioners
Committee of the Whole
September 22, 2005**

**Demonstration Garden
LBWD Administration Building**

Presented by
Jeri Deneen and Jon Powell, of DPA, Inc. &
LBWD Staff